

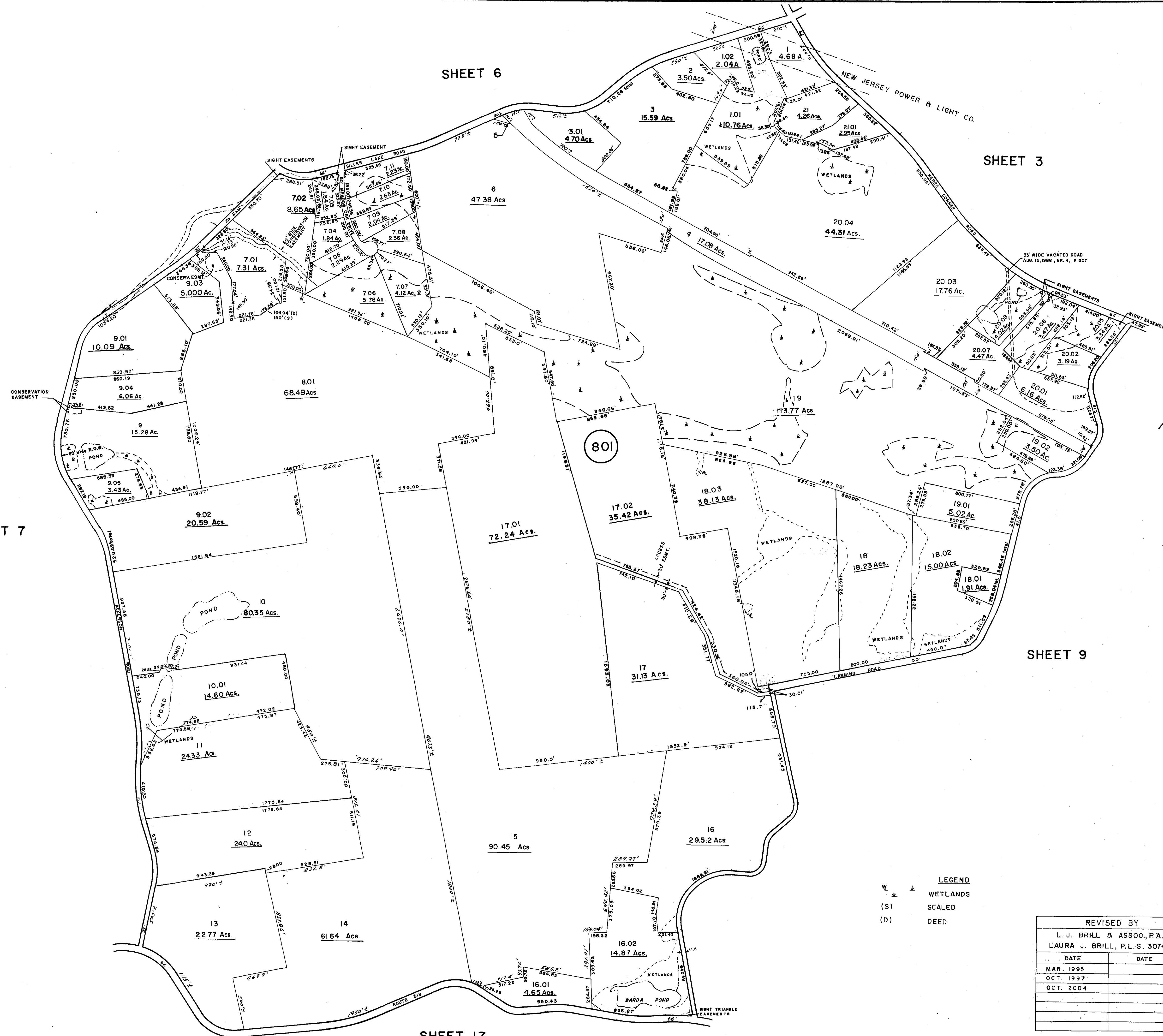
SHEET 7

SHEET 6

SHEET 3

SHEET 9

SHEET 17



DECEMBER, 1973	
JUNE 26, 1984	
APRIL 4, 1988	
JANUARY 24, 1988	
JULY 29, 1988	
FEB. 9, 1987	
DECEMBER 16, 1988	
DATE	DATE
REVISED	
DELAWARE VALLEY ASSOCIATES, INC. DANIEL E. KENT, III - L.S. # 14818	

TAX MAP
FRELINGHUYSEN TWP.
WARREN COUNTY,
NEW JERSEY

SCALE: 1" = 400' DATE: 5-62

J. L. JACOBS & COMPANY
 53 WEST JACKSON BOULEVARD
 CHICAGO 4, ILLINOIS

REVISED: 3-66

INDEX SHEET
LEGEND

- (25) SHEET NUMBER
- 12 BLOCK NUMBER
- SHEET LIMIT

NEW JERSEY DEPARTMENT OF THE TREASURY
 DIVISION OF TAXATION
 ENGINEERING & RAILROAD TAX BUREAU
 APPROVED AS A TAX MAP PURSUANT TO THE
 PROVISIONS OF CHAPTER 175, LAWS OF 1913, ETC.
 FOR THE DIRECTOR, DIVISION OF TAXATION
 BY: *C. Barnes* STATE SUPERVISOR
 DATE: NOV 8 1962 SERIAL NO. 372

- LEGEND**
- W L WETLANDS
 - (S) SCALED
 - (D) DEED

REVISED BY	
L. J. BRILL & ASSOC., P.A. LAURA J. BRILL, P.L.S. 30742	
DATE	DATE
MAR. 1995	
OCT. 1997	
OCT. 2004	

TO SHOW CONDITIONS AS OF OCTOBER, 2004