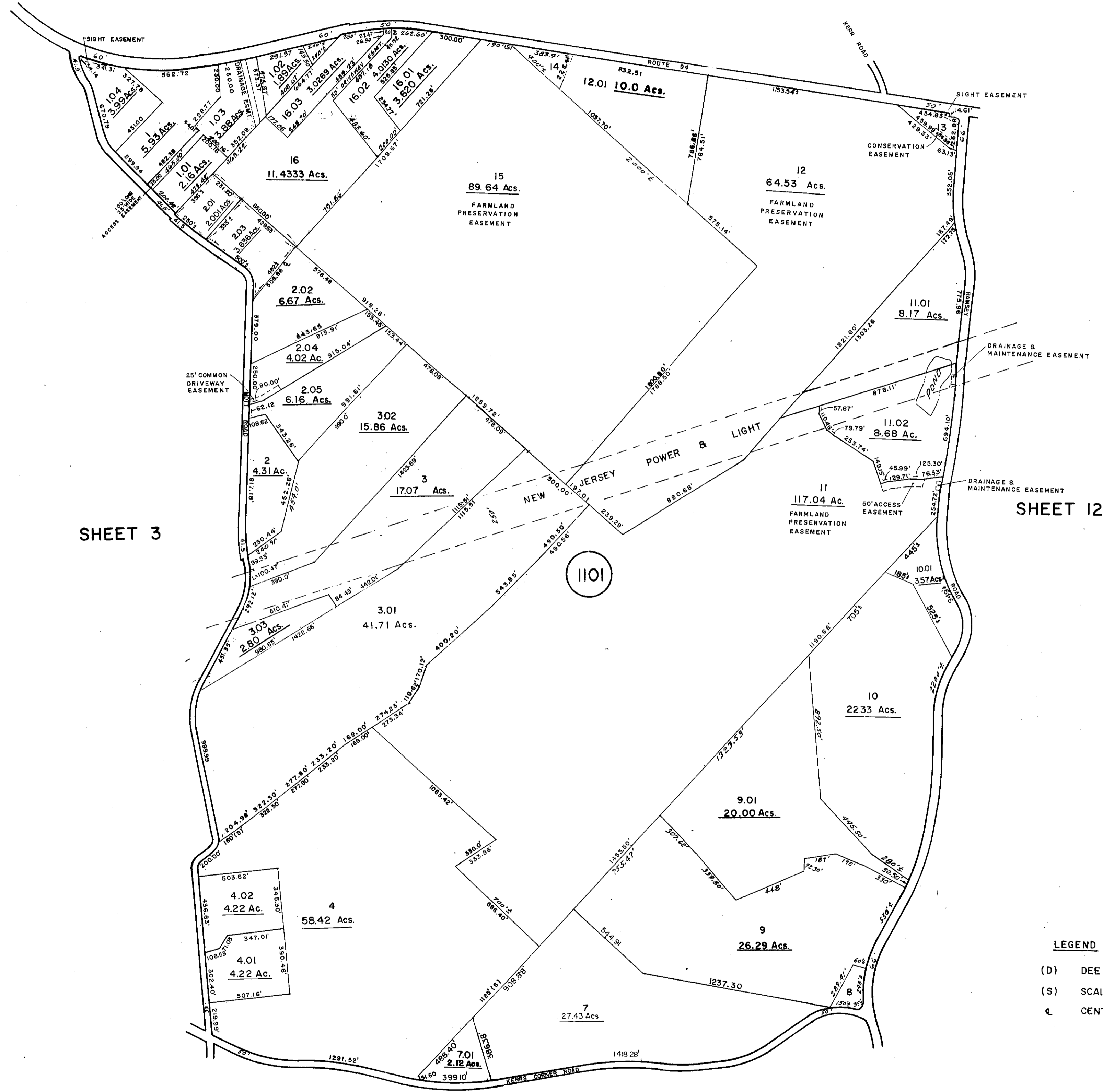


SHEET 2



SHEET 3

SHEET 12

SHEET 9

MARCH, 1973	JULY 29, 1986
DECEMBER, 1973	JAN. 5, 1987
FEBRUARY 3, 1975	FEB. 9, 1987
MAY, 1976	AUGUST 4, 1988
NOV. 30, 1977	DECEMBER 16, 1988
JUNE 27, 1984	
JANUARY 24, 1986	
DATE	DATE
REVISED	
DELAWARE VALLEY ASSOCIATES, INC. DANIEL E. KENT, III - L. S. N° 14918	

TAX MAP
 FRELINGHUYSEN TWP.
 WARREN COUNTY,
 NEW JERSEY

SCALE: 1" = 400' DATE: 5-62

J. L. JACOBS & COMPANY
 53 WEST JACKSON BOULEVARD
 CHICAGO 4, ILLINOIS

REVISED: *[Signature]*

LEGEND
 (D) DEED
 (S) SCALED
 CL CENTERLINE

INDEX SHEET LEGEND

(25)	SHEET NUMBER
12	BLOCK NUMBER
-----	SHEET LIMIT

REVISED BY

L. J. BRILL & ASSOC., P.A. LAURA J. BRILL, P.L.S. 30742	
DATE	DATE
MAR. 1993	
OCT. 1997	
OCT. 2004	

NEW JERSEY DEPARTMENT OF THE TREASURY
 DIVISION OF TAXATION
 ENGINEERING & RAILROAD TAX BUREAU

APPROVED AS A TAX MAP PURSUANT TO THE
 PROVISIONS OF CHAPTER 175, LAWS OF 1913, ETC.
 FOR THE DIRECTOR, DIVISION OF TAXATION

BY: *[Signature]*
 DATE: NOV 8 1962 SERIAL NO. 372