

SHEET 9

SHEET 12

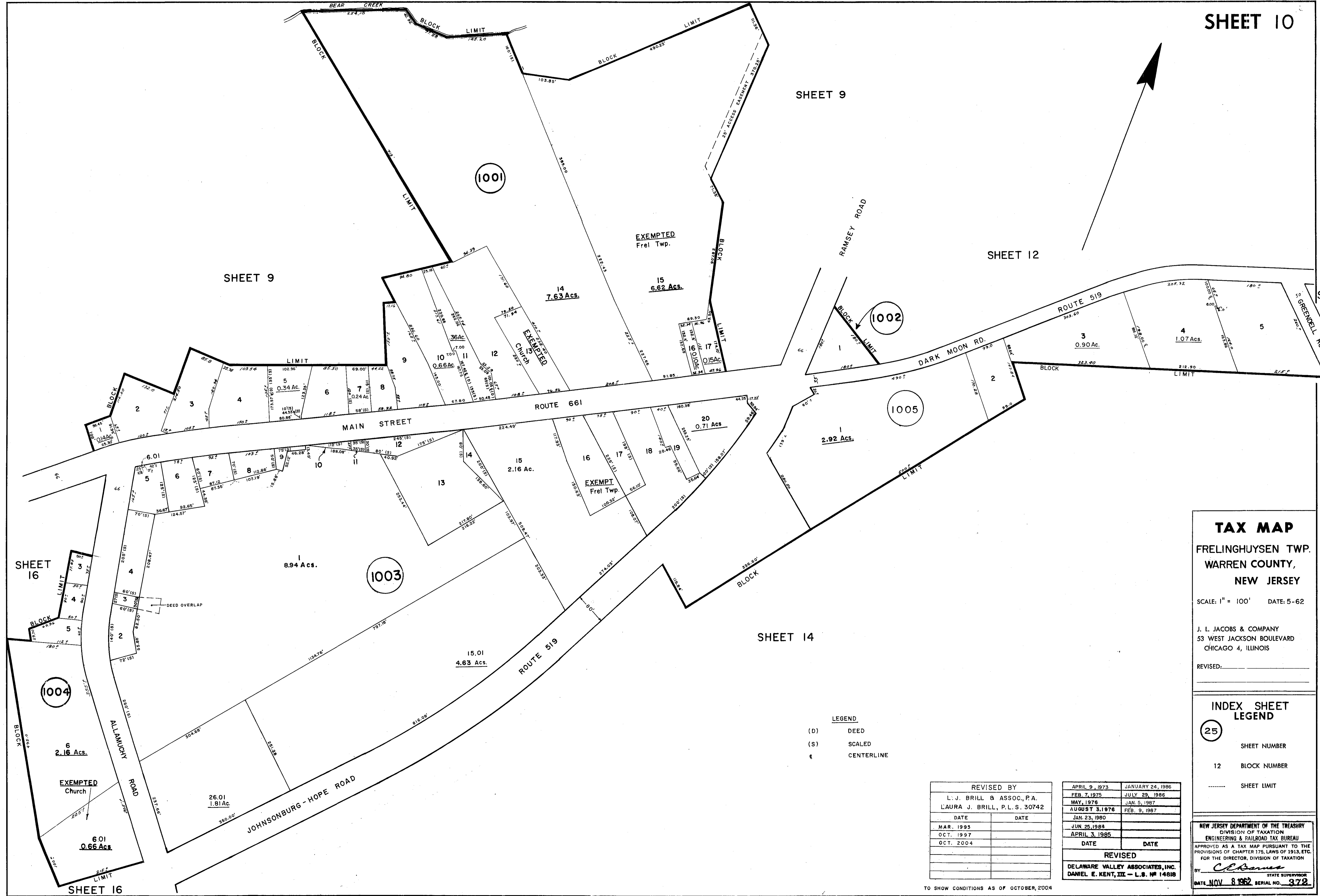
SHEET 13

SHEET 9

SHEET 16

SHEET 14

SHEET 16



TAX MAP
FRELINGHUYSEN TWP.
WARREN COUNTY,
NEW JERSEY

SCALE: 1" = 100' DATE: 5-62

J. L. JACOBS & COMPANY
 53 WEST JACKSON BOULEVARD
 CHICAGO 4, ILLINOIS

REVISED: _____

INDEX SHEET
LEGEND

- (25) SHEET NUMBER
- 12 BLOCK NUMBER
- SHEET LIMIT

- LEGEND**
- (D) DEED
 - (S) SCALED
 - ¢ CENTERLINE

REVISED BY	
L. J. BRILL & ASSOC., P.A. LAURA J. BRILL, P.L.S. 30742	
DATE	DATE
MAR. 1993	
OCT. 1997	
OCT. 2004	

REVISED	
APRIL 9, 1973	JANUARY 24, 1986
FEB. 7, 1975	JULY 29, 1986
MAY, 1976	JAN. 5, 1987
AUGUST 3, 1976	FEB. 9, 1987
JAN. 23, 1980	
JUN. 25, 1984	
APRIL 3, 1985	
DATE	DATE
REVISED	
DELAWARE VALLEY ASSOCIATES, INC.	
DANIEL E. KENT, III - L.S. # 14818	

NEW JERSEY DEPARTMENT OF THE TREASURY
 DIVISION OF TAXATION
 ENGINEERING & RAILROAD TAX BUREAU
 APPROVED AS A TAX MAP PURSUANT TO THE
 PROVISIONS OF CHAPTER 175, LAWS OF 1913, ETC.
 FOR THE DIRECTOR, DIVISION OF TAXATION
 BY: *D. E. Kent*
 DATE: NOV 8 1962 SERIAL NO. 372

TO SHOW CONDITIONS AS OF OCTOBER, 2004